

A COMPREHENSIVE TRAINING IN HUMAN TRAFFICKING:  
BOTH LABOR AND SEX

Daylily Health  
Resiliency Without Compromise Presentation  
Joyce Dixon-Haskett, LMSW, ACSW, SAP

©2017

1

---

---

---

---

---

---

---

---

emotional/psychological criminal  
social sexual verbal threats victim  
assault physical financial

©2017

2

---

---

---

---

---

---

---

---

A SURVIVOR'S STORY

3

---

---

---

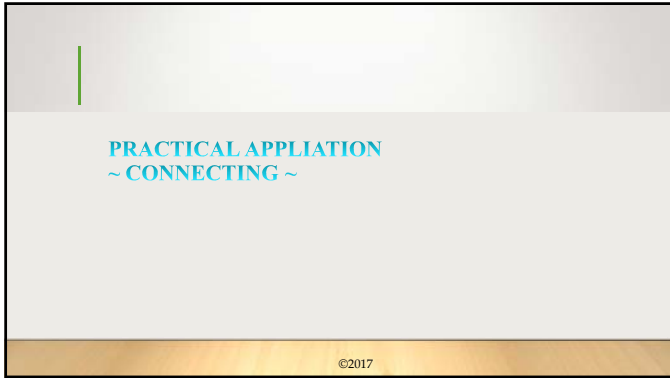
---

---

---

---

---



4

---

---

---

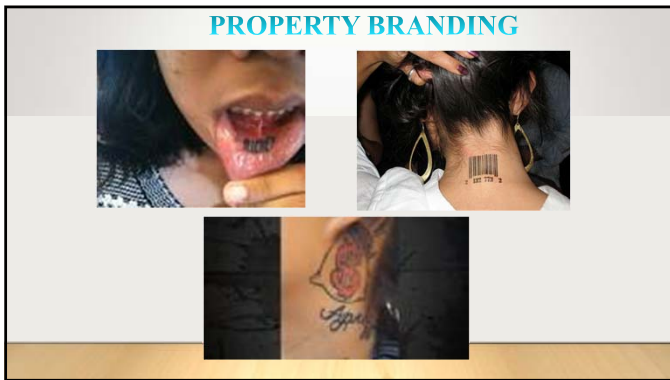
---

---

---

---

---



5

---

---

---

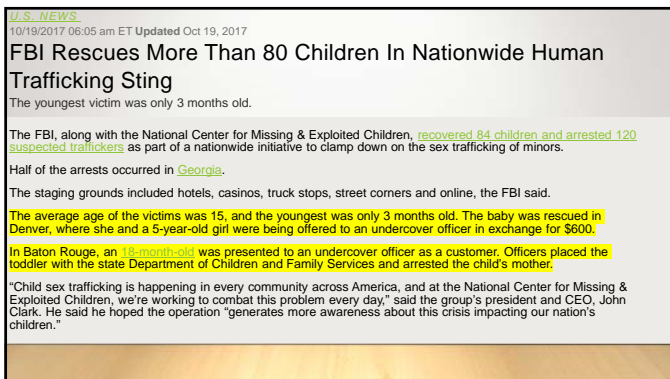
---

---

---

---

---



6

---

---

---

---

---

---

---

---

All of the victims rescued during the operation will receive assistance from state protective services and the FBI's Victim Services Division. If necessary, they also will be provided **medical and mental health counseling**.

"This operation isn't just about taking traffickers off the street," FBI Director Christopher Wray said in the statement. "It's about making sure we offer help and a way out to these young victims who find themselves caught in a vicious cycle of abuse."

"Child sex trafficking is happening in every community across America, and at the National Center for Missing & Exploited Children, we're working to combat this problem every day," said the group's president and CEO, John Clark. He said he hoped the operation "generates more awareness about this crisis impacting our nation's children."

All of the victims rescued during the operation will receive assistance from state protective services and the FBI's Victim Services Division. If necessary, they also will be provided medical and mental health counseling.

"This operation isn't just about taking traffickers off the street," FBI Director Christopher Wray said in the statement. "It's about making sure we offer help and a way out to these young victims who find themselves caught in a vicious cycle of abuse."

---

---

---

---

---

---

---

---

---

---

7

### THE SURVIVOR

- Guilt and Shame
- Mother/Daughter
- Father/Daughter
- Negative Assumptions

©2017

---

---

---

---

---

---

---

---

---

---

8

### GUILT AND SHAME

**GUILT**=This is what I did

- Assumes the blame
- I am a bad person
- I did something wrong
- There must be something wrong with me
- Apologetic Mindset

---

---

---

---

---

---

---

---

---

---

9

## GUILT AND SHAME

**SHAME**=This is who I am

- A bad person
- Outcast
- I am not good enough and will never be good enough
- I don't deserve to be loved; I don't deserve to be forgiven
- Apologetic Mindset

10

---

---

---

---

---

---

---

---

Guilt & Shame

MOTHER AND DAUGHTER  
FATHER AND DAUGHTER



11

---

---

---

---

---

---

---

---

## ARRESTED DEVELOPMENT VS. ACCELERATED DEVELOPMENT

- Delayed Personal Growth
- Matured Sexual Development
- Change: Acknowledgment and Acceptance

©2017

12

---

---

---

---

---

---

---

---

**RECOVERY  
and  
RE-ENTRY**

**Recovery**

- A return to a normal state of health, mind or strength.

**Re-entry**

- Retaking power and control of your own life

©2017

13

---

---

---

---

---

---

---

---

**CLOSURE  
VS.  
RECONCILIATION**

Closure:

- Resolution
- Decision
- Conclusion
- Ending

©2017

14

---

---

---

---

---

---

---

---

**CLOSURE VS RECONCILIATION (Cont.)**

**Reconciliation**

- Making one view or belief compatible with another
- Grief
  - Mental Anguish
- Loss
  - Separation Anxiety

15

---

---

---

---

---

---

---

---

### SHORT TERM AND LONG TERM NEEDS

<p><b>IMMEDIATE/SHORT TERM</b></p> <ul style="list-style-type: none"> <li>➢ Shelter</li> <li>➢ Food, clothing, etc.</li> <li>➢ Crisis intervention for mental health issues, substance abuse</li> <li>➢ Money</li> </ul>	<p><b>LONGER TERM</b></p> <ul style="list-style-type: none"> <li>➢ Legal advocacy (immigration issues, T visa...)</li> <li>➢ Extended mental health care</li> <li>➢ School enrollment</li> <li>➢ Life skills and job training</li> <li>➢ Family services, potential reunification</li> <li>➢ Transition services</li> <li>➢ Employment</li> </ul>
--	---



©2017

16

---

---

---

---

---

---

---

---

---

---

### PATIENCE

- Short Term Results---Continued Reconciliation
- Long Term Results---Continued Reconciliation
- Elephants in the Room
  - Asking the hard questions
  - Answering the hard questions

©2017

17

---

---

---

---

---

---

---

---

---

---

### REALISTIC EXPECTATIONS

<p><b>SUVIVOR</b></p> <ul style="list-style-type: none"> <li>➢ Different Needs           <ul style="list-style-type: none"> <li>➢ Permission</li> <li>➢ Validation</li> <li>➢ Case Management</li> <li>➢ Life Skills</li> </ul> </li> <li>➢ Trust and Mistrust</li> <li>➢ Anger</li> </ul>	<p><b>PROFESSIONAL</b></p> <ul style="list-style-type: none"> <li>➢ Language of the Profession           <ul style="list-style-type: none"> <li>➢ Connection</li> </ul> </li> <li>➢ Confidence           <ul style="list-style-type: none"> <li>➢ Denial</li> </ul> </li> <li>➢ Sensitivity           <ul style="list-style-type: none"> <li>➢ Notes</li> </ul> </li> <li>➢ Vulnerability</li> </ul>
--	--

©2017

18

---

---

---

---

---

---

---

---

---

---

**HUMAN TRAFFICKING RED FLAGS**

- Older Boyfriend
- Often misses school
- Not attending school
- Inappropriate clothing for age, weather conditions etc.
- Having large amounts of cash or jewelry
- Appears to have been deprived of food, water sleep, medical care
- Tattoos, branding, black eyes, bruises, ligature marks
- Shows signs of drug addiction
- Makes references to frequent travel to other cities
- False ID's
- Accompanied by a controlling person or boss; not speaking on own behalf
- Lack of control over personal schedule, money, I.D., travel documents
- Transported to or from work; lives and works in the same place
- Debt owed to employer/crew leader; inability to leave job
- Bruised, depression, fear, overly submissive
- Coached on what to say to law enforcement on age etc.

©2017

19

---

---

---

---

---

---

---

---

---

---

**MICHIGAN LEGISLATION**

- PA 343 of 2014 (SB 597 Warren) Training for Medical Professionals: Requires that medical professionals be trained to identify the signs of human trafficking in patients.
- PA 337 of 2014 (SB 587 Gregory) DHS Referral: DHS shall perform assessment/psychological evaluation and medical examination when the juvenile is referred to the department. In addition to any reunification, adoption or other services provided to a child under DHS' care counseling services appropriate for the victim.
- PA 339 of 2014 (SB 590 Proos) Allow Victims to Sue Captors: To be known as the "Human trafficking victims compensation act". This bill will allow victims to sue their captors for damages that result from physical and mental suffering, damage and destruction of property and expenses incurred.

PA 328 of 2014 (SB 602 Hune) Requires "Johns" to Register on the Sex Offender Registry:  
Requires those caught soliciting prostitution from a minor to be placed on the sex offender registry.

©2017

20

---

---

---

---

---



---

---

---

---

---

 **FIVE KEY POINTS** 

- Human Trafficking is happening in our own backyards and within our communities
- That victims of human trafficking are not criminals
- Traffickers/Pimps and Johns need to be held accountable
- Program the National Human Trafficking Hotline Number into your phone
- Join the Anti Human Trafficking Movement – DO YOUR PART!

21

---

---

---

---

---

---

---

---

---

---

**QUESTIONS – CONTACT ME**



Ms. Joyce Dixson-Haskett  
JoyceHaskett@gmail.com

---

---

---

---

---

---

---

---