



---

---

---

---

---

---

---

---

**Disclosure**

- I do not represent the ACGME, the AOA, or any other organization
- I am not an expert
- This presentation is based on my knowledge, experiences, and opinions

---

---

---

---

---

---

---

---

**Objectives**

- What we don't know about single accreditation
- Changes to your timeline of duties
- ACGME Accreditation Process
- Clinical Competency Committee & You
- ACGME Website
- Coordinator Resources

---

---

---

---

---

---

---

---

## Things we don't know...

- What will single accreditation look like?
- Will the current new program application change?
- What will be the criteria for ACGME Osteopathic Recognition?
- What will it mean to be a program that has this recognition?



---

---

---

---

---

---

---

---

## More we don't know....

- Will there be one match?
- What is your game plan for future recruitment of MD applicants?
- What will the Intraining exam look like?
- Will the osteopathic rotating internship required in some states become a transitional year for ACGME purposes?



---

---

---

---

---

---

---

---

## Timeline Differences

### • TIVRA & OPPORTUNITIES

- Annual update – assigned reporting dates
- Faculty survey – January
- Resident survey- January-June
- Resident Evaluations/ CCC semi-annually



---

---

---

---

---

---

---

---

## Timeline Differences

AAMC National GME Census – Feeds information into FREIDA  
Deadlines for the 2014-2015 National GME Census:

- **July 11, 2014** - Deadline for Program Survey (August FREIDA Online Listing)
- **July 31, 2014** - Opening of the 2014-2015 Resident Survey
- **September 30, 2014** - Deadline for Program Survey (October FREIDA Online Listing)
- **December 19, 2014** - Final deadline for the National GME Census (both Program and Resident Surveys)

---



---



---



---



---



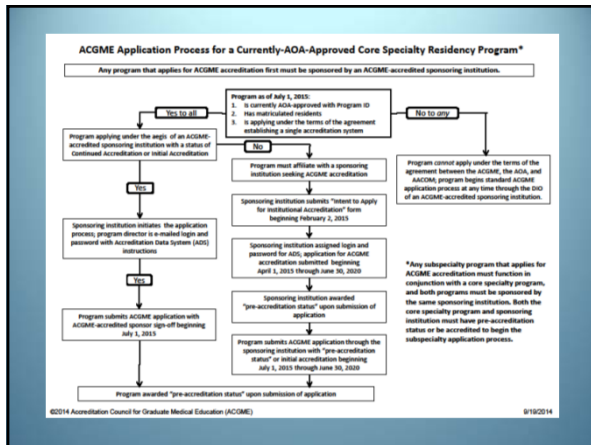
---



---



---




---



---



---



---



---



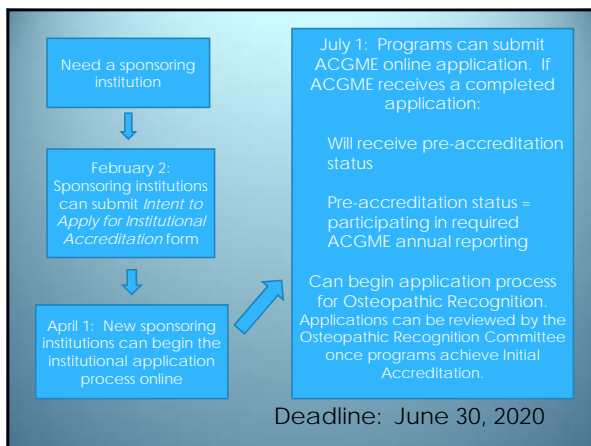
---



---



---




---



---



---



---



---



---



---



---

## Program Application

- Online application process within ADS.
- Review the “**Application Instructions**” located under Common Resources.
- ACGME website – print current application & start now.
- Will receive pre-accreditation status if application is complete.

---

---

---

---

---

---

---

---

## SUCCESS! Pre-accreditation Status!

- Follow ACGME requirements
- Data collection system
- Your program eligible to take both MD & DO graduates
- Will be scheduled for a site visit



---

---

---

---

---

---

---

---

## Clinical Competency Committee “CCC”

- Required
- Three or more active teaching faculty appointed by PD
- Reviews the progress of all residents in the program
- No residents
- May or may not choose to have PD on committee

---

---

---

---

---

---

---

---

## What is your role with the CCC?

- Coordinators cannot be members of CCC but usually involved
- Set up CCC meetings
- Set up New Innovations or other system for milestone evaluations
- Report milestone progress of each resident in Web ADS w/your PD



---

---

---

---

---

---

---

---

## ACGME Website Review

- [www.acgme.org](http://www.acgme.org) BOOKMARK IT!
- Specialty Specific Information/Resources
  - RC Meeting dates
  - Institutional, & Specialty Requirements
  - \*Current new program application
- Common Resources
  - Common Requirements
  - Coordinator Resources

---

---

---

---

---

---

---

---

## ACGME Website

- Data Collection System:
  - Web Ads:
    - Faculty
    - Residents
    - Citations
    - Upcoming site reviews
- Sample resident survey questions
- ACGME annual conference

---

---

---

---

---

---

---

---

## ACGME Advice

- Requirements: Should = MUST!
- ACGME strict with due dates
- ACGME site visits are different – much more detailed
- Resident boards pass rate can affect accreditation
- FAQs

---

---

---

---

---

---

---

---

## Resources

- ❖ AACOM Single GME Accreditation System FAQs  
[http://www.aacom.org/news/latest/Pages/SingleGME\\_FAQs.aspx](http://www.aacom.org/news/latest/Pages/SingleGME_FAQs.aspx)
- ❖ ACGME FAQs
- ❖ AOA - FAQs: Single GME Accreditation System  
<http://www.osteopathic.org/inside-aoa/Pages/single-gme-accreditation-system-faq.aspx>




---

---

---

---

---

---

---

---

- ACGME Terms-ESSENTIAL!  
Available on ACGME website
- [Susan.tincknell@mqhs.org](mailto:Susan.tincknell@mqhs.org)
- Want to know more about the NRMP?  
[www.nrmp.org](http://www.nrmp.org) – residency timeline
- Coordinators of allopathic programs. Do you have an association?




---

---

---

---

---

---

---

---

## What you can be doing now

- ✓ Familiarity w/ACGME website, "Steps to accreditation"
- ✓ Penciling in accreditation application-make a plan with your PD and stick to it!
- ✓ Gathering board certification dates for all required faculty
- ✓ Resident Handbook – start making list of updates
  - Time off
  - Duty hours
  - Evaluations



---

---

---

---

---

---

---

---

## Still more to do.....

- ✓ Using New Innovations? Review Milestones & watch webinars
- ✓ Reviewing, printing, bookmarking ACGME requirements
- ✓ Attend ACGME or specialty conference
- ✓ Recruitment committee discussion re: the future (2016?)
- ✓ Ask for a future presentation on recruitment-NRMP & allopathic schools



---

---

---

---

---

---

---

---

*Thank you for your time!*



Susan Tincknell, C-TAGME  
Marquette Family Medicine Residency  
Program, Marquette, MI  
susan.tincknell@mghs.org  
906-225-3867

---

---

---

---

---

---

---

---